



LC9009

REV1.0-Revised DEC 2007

Low Voltage Detector With Built-in Delay Circuit

DESCRIPTION

LC9009 is a series of high precision voltage detector with ultra low current consumption (500nA typ. at $V_{in}=3.0V$) and a built-in delay circuit. It can work at very low voltage, which makes it perfect for system reset.

LC9009 is composed of high precision voltage reference, comparator, delay circuit, output driver and resistor array. Internally preset detect voltage has a low temperature drift and requires no external trimming.

Two type of output, CMOS and N-channel open-drain are available.

LC9009 is available in SOT-23-3,SOT-23-5 which is Pb free.

FEATURES

- High-Precision Detection Voltage: $\pm 2\%$
- Detection Voltage: 0.9V~6.0V (in 0.1V steps)
- Built-in Power on Reset Delay time circuit: Refer to Selection Guide
- Operating Voltage Range:0.7V-10V
- Ultra-low current consumption:500nA typ. (at $V_{in}=3.0V$)
- Two Output Forms :CMOS (Active Low) and N-channel open-drain (Active Low)

APPLICATIONS

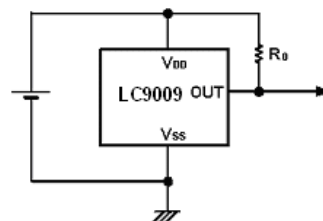
- Power monitor for portable equipment such as PDA,DSC,Mobile phone,Notebook,MP3
- CPU and Logic Circuit Reset
- Battery Checker,Power Failure Detector

ORDERING INFORMATION

LC9009 [1](#) [2](#) [3](#) [4](#) [5](#) [6](#)

Code	Description
1	Temperature&Rohs: C:-40~85°C ,Pb Free Rohs Std.
2	Package type: B3:SOT-23-3 B5:SOT-23-5
3	Packing type: TR:Tape&Reel (Standard)
4	Detector Voltage: e.g. 090=0.9V 293=2.93V 600=6.0V
5	Delay time: A:50mS B:100mS C:150mS D:200mS E:250mS F:300mS G:400mS
6	Output forms: C:CMOS N:Nch open drain

TYPICAL APPLICATION



- R0 is unnecessary for CMOS output products..
- The value of R0 need to be selected in different application, Typical value is 470k Ω

PIN CONFIGURATION

