



LC3030C

REV1.0-Revised DEC 2007

High Efficiency ,Multi-Function Step-up DC/DC Controller

DESCRIPTION

LC3030C series are CMOS-based PFM step-up DC-DC Controller with low supply current and high output voltage accuracy. Quiescent current drawn from power source is as low as 6uA. It is capable of delivering 500mA output current at 4.0V output with 2V input Voltage. Only four external components are necessary: An inductor, a Schottky diode, an output filter capacitor and a NMOSFET or a NPN transistor. All of these features make LC3030C series be suitable for the portable devices, which are supplied by a single battery to four-cell batteries.

LC3030C has a drive pin (EXT) for external transistor. So it is possible to load a large output current with a power transistor which has a low saturation voltage.

LC3030C integrates stable reference circuits and trimming technology, so it can afford high precision and low temperature-drift coefficient of the output voltage.

LC3030C is available in SOT-23-3 and SOT-23-5 packages which are Pb free. And in SOT-23-5 the device can be switch on or off easily by CE pin, to minimize the standby supply current.

FEATURES

- Deliver 500mA at 4.0V Output voltage with 2V input Voltage
- The controller output voltage can be adjusted from 2.5V~6.0V(In 0.1V step)
- Output voltage accuracy ----- $\pm 2\%$
- Low temperature-drift coefficient of the output voltage----- $\pm 100\text{ppm}/^\circ\text{C}$
- Only four external components are necessary: An inductor, a Schottky diode, an output filter capacitor and a NMOSFET or a NPN transistor
- High power conversion efficiency---90%
- Low quiescent current drawn from power source----- 6uA
- Small package----- SOT-23-3,SOT-23-5

APPLICATIONS

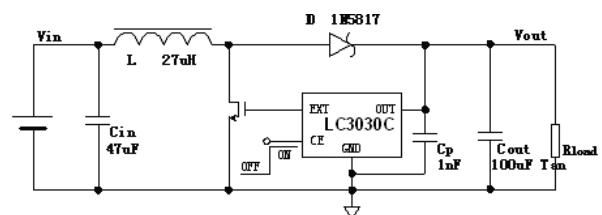
- Power source for PDA,DSC,MP3 Player,electronic toy and wireless mouse
- Power source for a single or dual-cell battery-powered equipments
- Power source for LED

ORDERING INFORMATION

LC3030C [1](#) [2](#) [3](#) [4](#)

Code	Description
1	Temperature&Rohs: C:-40~85°C ,Pb Free Rohs Std.
2	Package type: B3:SOT-23-3 B5:SOT-23-5
3	Packing type: TR:Tape&Reel (Standard)
4	Output voltage: e.g. 25=2.5V 56=5.6V 60=6.0V

TYPICAL APPLICATION



PIN CONFIGURATION

