



LC1117

REV1.0-Revised DEC 2007

1A Bipolar Linear Regulator

DESCRIPTION

LC1117 is a series of low dropout three-terminal regulators with a dropout of 1.26V at 1A load current.

Other than a fixed version ($V_{out} = 1.2V, 1.8V, 2.5V, 2.85V, 3.3V, 5V$), LC1117 has an adjustable version, which can provide an output voltage from 1.25 to 13.8V with only two external resistors.

LC1117 offers thermal shut down and current limit functions, to assure the stability of chip and power system. And it uses trimming technique to guarantee output voltage accuracy within $\pm 1.5\%$ (1.2V version is within $\pm 2\%$). Other output voltage accuracy can be customized on command, such as $\pm 1\%$ or $\pm 2\%$.

LC1117 is available in SOT-223, TO-252 power package.

ORDERING INFORMATION

LC1117 [1](#) [2](#) [3](#) [4](#) [5](#)

Code	Description
1	Temperature&Rohs: C:-40~85°C ,Pb Free Rohs Std.
2	Package type: L:SOT-223 O:TO-252
3	Packing type: TR:Tape&Reel (Standard)
4	Output voltage: e.g. 12=1.2V 18=1.8V AD=Output adjustable
5	Voltage accuracy: 1= $\pm 1\%$ (Customized) Blank(default)= $\pm 1.5\%$ 2= $\pm 2\%$ (Customized)

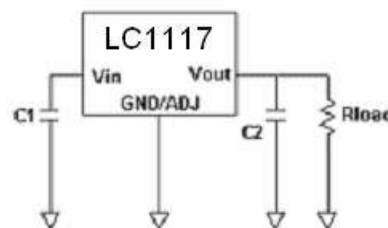
FEATURES

- Other than a fixed version and an adjustable version, output value can be customized on command.
- Maximum output current is 1A
- Range of operation input voltage: Max 15V
- Line regulation: 0.2%
- Load regulation: 0.4%
- Environment Temperature: -40°C~85°C

APPLICATIONS

- Power Management for Computer Mother Board, Graphic Card
- LCD Monitor and LCD TV
- DVD Decode Board
- ADSL Modem
- Post Regulators for Switching Supplies

TYPICAL APPLICATION



Application circuit of LC1117 fixed version

NOTE: Input capacitor ($C_{in}=10\mu F$) and Output capacitor ($C_{out}=22\mu F$) are recommended in all application circuit. Tantalum capacitor is recommended.

PIN CONFIGURATION

