



LC1251

REV1.0-Revised DEC 2007

Wide input 150mA Low Consumption Linear Regulator

DESCRIPTION

LC1251 series is a group of positive voltage output, high voltage input, low power consumption, low dropout voltage regulator. It can afford 150mA output current when input-output voltage differential drops to 900mV.

LC1251 can provide output value in the range of 2.5V~12V every 0.1V step. It also can be customized on command.

LC1251 includes high accuracy voltage reference, error amplifier, current limit circuit and output driver module.

LC1251 has well load transient response and good temperature characteristic, which can assure the stability of chip and power system. And it uses trimming technique to guarantee output voltage accuracy within $\pm 2\%$.

LC1251 is available in SOT-89-5 with EN Pin and TO-92, SOT-89-3 without EN Pin packages which is lead free.

FEATURES

- Low Power Consumption: 9 μ A (Typ.)
- High Output Current: 150mA
- Small Input-Output Differential: 900mV@150mA (Vout=3.3V)
- High input voltage (up to 24V)
- Highly Accuracy: $\pm 2\%$
- Output Current Limit

APPLICATIONS

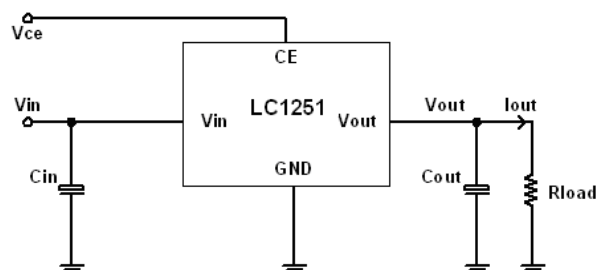
- Battery Powered equipment
- Communication equipment
- Audio/Video equipment

ORDERING INFORMATION

LC1251 [1](#) [2](#) [3](#) [4](#) [5](#)

Code	Description
1	Temperature&Rohs: C:-40~85°C ,Pb Free Rohs Std.
2	Package type: C3:SOT-89-3 C5:SOT-89-5 H:TO-92
3	Packing type: TR:Tape&Reel (Standard) BG:Bag(TO-92)
4	Output voltage: e.g. 25=2.5V 50=5.0V 12=12V
5	Voltage accuracy: Blank(default)= $\pm 2\%$

TYPICAL APPLICATION



NOTE: Input capacitor (Cin=1 μ F) and Output capacitor (Cout=1 μ F) are recommended in all application circuit. Tantalum capacitor is recommended.

PIN CONFIGURATION

